



RYETEC RAPID-MOVER

UNIVERSAL MACHINERY MOVER

The Ryetec Rapid Mover has been designed to allow the quick and easy movement of both mounted and trailed implements around a busy farm yard, to maximise valuable storage areas using a telehandler.

The Rapid Mover can pick up a linkage mounted machine by the top link alone, thanks to the rapid hook and large rubber pads which secure the lower linkage mountings. A simple folding clevis hitch allows trailed implements to be moved and manoeuvre much easier than with a tractor.

Standard Specification:

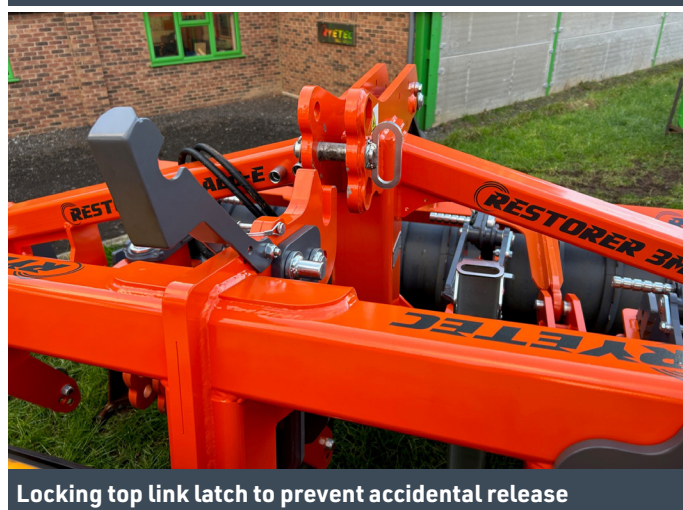
- » **Bolt on quick hitch plates** – to fit all types of telehandlers and wheeled loaders.
- » **Large centre "top link" hook** – any implement with a (Cat 1, 2 & 3) topline pin fitted can be picked up and dropped off without the operator leaving the seat.
- » **Large lower link rubber pads** – hold the bottom link brackets to stop the implement twisting during movement without removing paint or damaging the brackets.
- » **Fold out clevis hitch** – one pin unlocks the clevis drawbar. Tipping the Rapid Mover forward gives great visibility to move trailed implements, even 50mm ball hitches.
- » **Locking top link catch** – prevents accidental release of the carried implement.
- » **Heavy duty lifting shackle point** – for use with lifting straps to "crane" items.

Options:

- » **Crane Jib**
- » **Bag Lift**



Fold out clevis hitch to move trailed implements with ease



Locking top link latch to prevent accidental release

For more information contact Ryetec Industrial Equipment Limited
 Mill House, A64 East Knapton, Malton, North Yorkshire YO17 8JA
 T: 01944 728 186 | www.ryetec.co.uk | [f /ryetec](https://www.facebook.com/ryetec)



RYETEC PRODUCT RANGE

ENGINEERED FOR STRENGTH & VERSATILITY



Restorer 4m ALD running front mounted with combi drill



Restorer 6m ALD with rear packer



Restorer 4m ALD with hydraulic linkage working as a toolbar



Restorer 3m GLD grassland low disturbance sub soiler



Weightbox's & Workbox's with various options/colours



Workbox in action

For more information contact Ryetec Industrial Equipment Limited
Mill House, A64 East Knappton, Malton, North Yorkshire YO17 8JA
T: 01944 728 186 | www.ryetec.co.uk | [f /ryetec](https://www.facebook.com/ryetec)

RYETEC
Specialist Machinery For Forestry, Amenities & Farming