

Wood processor

Supplied by:

RYETEC

The sense
of innovation

XYLOG 600



Main technical data

- Maximum cutting diameter: 600 mm (23.6")
- Adjustable cutting length: 250 mm (9.8"), 330 mm (13"), 400 mm (15.7") and 500 mm (19.7")
- Cutting length is managed by a mechanical stop, hydraulically retractable during cutting process, not interfering when sawing.
- Maximum power 35 ton with ongoing automatic adjustable speed ISO POWER
- Pusher surface is always oversizing or fitting logs up to 600 mm (23.6") in diameter
- Cutting system " **SUPER CUT** " with chainsaw chain guide
 - Harvester sawhead guide
 - Guide length 820 mm (32.28")
 - Chain type 0.404
 - Automatic tension of the chain
 - Automatic self-lubrication of the chain
 - Hydraulic drive
 - Hydraulic cylinder control
 - Cutting from bottom to top (time saving on small logs)
- Hydraulic wood holding grip during cutting process, possibility to manage log fall with outside ejection. No need for operator to fetch it into the machine.
- Independant clamps to hold wood during cutting whatever wood form. Clamps are always in contact with wood.
- Thanks to clamps armfull wood could be cut. 3 or 4 logs depending on the diameters.
- Cutting zone is separated from splitting zone
- Log is pushed to splitting zone
- Possibility to saw and split at the same time, thanks ISO POWER system.
- Hydraulic cooler with large heat exchanger area
- Hydraulic tank 180 litres (47.5 gal.)
- Splitting wedge with vertical sliding including:
 - 16-way position, with circular knife of 250 mm (9.8") in diameter(diameter between 350 mm (13.8") and 600 mm = 23.6")
 - 8-way (diameter between 200 mm (7.9") and 400 mm = 15.8")
 - 4-way (150 mm to 250 mm, 6 to 9.8")
 - 2-way (0 mm to 200 mm, 0 to 7.9")
- Splitting wedge hydraulically adjustable in height
- Exit chute for logs not to be splitted (maximum 200 mm = 7.9") not passing through splitting wedge
- Machine with manual control with ergonomic single joystick, automatic start of the cylinder after ejection. Position of the joystick starting from platform ground is around 1m30 (4.2')
- Incoming belt conveyor in V-shape (120°) operational length 4 meters, width belt 300 mm (11.8"), allowing a good transfer of the log to cutting zone, even for small length

Options technical data

1) DISCHARGE CONVEYOR 4 Meter WITH ROLLER SPIKES Ref 71750A:

- Belt with metal bars, hydraulically foldable no offset
- 4 meter long (13´)
- 700 mm wide (27.5")
- Hydraulically adjustable in height
- Exiting splitting area with motorised spike rollers over 700 mm (27.5"), to clear splitted bits and clean them from waste
- Option 1 meter extension (71786A). Total of 5 meter.



2) SWIVELLING DISCHARGE CONVEYOR WITH ROLLER SPIKES (for stationary machine) Ref 71756A:

- Belt with metal bars
- 8 meter long (13´)
- 700 mm wide (27.5")
- Hydraulically adjustable in height from 1.30 m (4.2´) to 5.00 m (16.4´)
- Hydraulic offset with motorized wheels, over 6.00 m (19.7´)
- Exiting splitting area with motorised spike rollers over 700 mm (27.5"), to clear splitted bits and clean them from waste



3) PLATFORM DECK Ref 71749A:

- Incoming deck with chains
- Operational length around 2 meter (6.5´)
- Hydraulically foldable for transport
- Operational width 2 m (6.5´), with 3 chains (2 with 800 mm = 31.5", in between and a third one at 1.20 m = 47.2")
- Hydraulic drive

**4) PLATFORM DECK WITH 3 CHAINS (stationnary machine) Ref . 71754A:**

- Incoming deck with 3 chains for log length up to 4.00m maximum (13´)
- Operational length around 8 meter (6 meter + 2 meter, 19.7´ + 6.5´)
- Deck with 2 levels with independant motors to separate easily wood
- Operational width 2 m (6.5´), with 3 chains (2 with 800 mm = 31.5", in between and a third one at 1.20 m = 47.2")
- Hydraulic drive



5) PLATFORM DECK WITH 4 CHAINS (stationnary machine) Ref . 71755A:

- Incoming deck with 4 chains for log length up to 6.00 m maximum (19.7´)
- Operational length around 8 meter (6 meter + 2 meter, 19.7´ + 6.5´)
- Deck with 2 levels with independant motors to separate easily wood
- Operational width 3.6 m (11.8´), with 4 chains (3 X 1.20 m = 3 x 47.2" between 2 axles)
- Electric drive for 6 m (19.7´) long logs
- Hydraulic drive for 2 m long logs.

**6) LOADING NOTCHED ROLLER (stationnary machine) Ref . 71757A:**

- Loading notched roller in diabolo shape set up in front of incoming belt conveyor in V form
- For logs over 4 meter long (13´).

**7) TRANSFER AXLE Ref . 71747A:**

- Adjustable arrow (3 positions)
- Single axle with wheels 500/50 x 22.5
 - TUBLESS type 16 layers
 - FLOTATION 648 profile
 - Load index for one tyre 158A8 (5060 Kg at 25 Km/h at 3 bars) (11 155 lbs at 15 mph at 43 PSI)
- Speed transfer 25 km/h (15 mph)
- Total weight around 8.5 ton (18740 lbs)
- Hydraulic stand with manual pump
- Ground clearance 410 mm (16.4") at work and at cylinder level of exit conveyor.
- Time for setting up at work for mobile machine is around 8 to 10 minutes including Deck unfolding with stands, exit conveyor and security guard

8) DRIVE TROUGH TRACTOR'S PTO Ref. 71748A:

- PTO 540 rpm and 90 HP at PTO, around 110 / 120 HP for tractor
- Hydraulic piston pump LOAD SENSING type, 130 l/min (34 US gpm) for splitting cylinder and wedge adjustment
- A closed circuit pump with variable displacement of 80 l/min (21 US gpm) for sawing (better performance thanks to better efficiency)
- A gear pump of 24 l/min (6 US gpm) for various functions
- A gear pump of 18 l/min (4.8 US gpm) for hydraulic cooler drive
- Multiplier box

**9) DRIVE TROUGH ELECTRIC ENGINE Ref. 71753A:**

- A three-phase electric motor of 55 Kw (75 HP) 400/600 volt
- Speed 1500 rpm
- Hydraulic piston pump LOAD SENSING type, 130 l/min (34 US gpm) for splitting cylinder and wedge adjustment
- A closed circuit pump with variable displacement of 80 l/min (21 US gpm) for sawing (better performance thanks to better efficiency)
- A gear pump of 24 l/min (6 US gpm) for various functions
- A gear pump of 18 l/min (4.8 US gpm) for hydraulic cooler drive
- Electric box to start engine



10) DRIVE THROUGH DIESEL HEAT ENGINE Ref. 71713B:

- " DEUTZ" engine, 75 HP/55 kW, **Stage 5 (Europe),Tier IV final (North America)**
- **4 Cylinders, 2.9 L (0.528 US gal)**
- Hydraulic piston pump LOAD SENSING type,130 l/min (34 US Gal/min) for splitting cylinder and wedge adjustment
- A closed circuit pump with variable displacement of 80 l/min (34 US gpm) for sawing (better performance thanks to better efficiency)
- A gear pump of 24 l/min (6 US gpm) for various functions
- A gear pump of 18 l/min (4-5 US gpm) for hydraulic cooler drive
- Water cooling
- Protective soundproof canopy
- 200 Litre diesel tank (53 gal)
- Battery

**11) WEDGE AUTOMATIC POSITIONNING Ref. 71751A COMPULSORY:**

- Splitting wedge will be centered automatically according to the log diameter measured by laser eye sensor.Regulation on control screen as followed:
 - Example :
 - Diameter up to 200 mm (7.9") → 2-way
 - Diameter from 150 mm (5.9") to 300 mm (11.8") → 4-way
 - Diameter from 200 mm (7.9") to 400 mm (15.8") → 8-way
 - Diameter from 350 mm (13.8") to 600 mm (23.6") → 16-way
- Position of the splitting wedge with laser eye sensor
- Integrated "XYLOMETER" wood scaling system allowing better maintenance and adjustment of the machine



12) SHED WITH CLOTH COVERED PLASTIC Ref. 71773A:

- Shed is mounted on safety guard. Both are folded for the transport.

Ps: Option compatible with the 1m extension outfeed conveyor. An additional valve is fitted by the stairway to control the outfeed conveyor and allowing the safety guard in position.



13) VACCUM SYSTEM FOR SAWDUST Ref. 71784A:

- Electric engine 3 phases of 5.5kw for sawdust, diameter of the hoses 400mm



14) GALVANISE CYCLONE Ref. 71785A :

- Cyclone diameter of 800 mm without support. Length of rigid pipe 7m max. (Delivered without support)

PS: The support is at your charge



15) EXTENSION OF 1 METER FOR DISCHARGE CONVEYOR FIXED Ref. 71786A:

- Conveyor extension of 1 meter long for discharge conveyor 4m (71750A) only. Option compatible with the shed.



16) DOUBLE CUT SYTEM (Contact us):

- Automatic positioning of the length stop wood, adjustable on the display
- After the 1st cut, the stop wood retract itself by a pressure on joystick button into position for the 2nd cut. The 2 logs are eject in the splitting zone in 1 movement. Time saving for small length up to 250mm maximum.

Length cut possible on 220, 225 and 250mm



17) SPIKED ROLLERS ONLY (Contact us):

- On the wedge output, 5 motorised spike roller repartited into a length of 700 mm to remove the split log and clear logs from waste. Without conveyor.



18) HYDRAULIC STAND (mobile version only) Consult us:

- 4 Hydraulic stand fitted on each corner of the wood processor for better stability. Possibility to have 2 hydraulic stand.

19) HYDRAULIC PUMP 36L/min + VALVE TO SUPPLY A CRANE

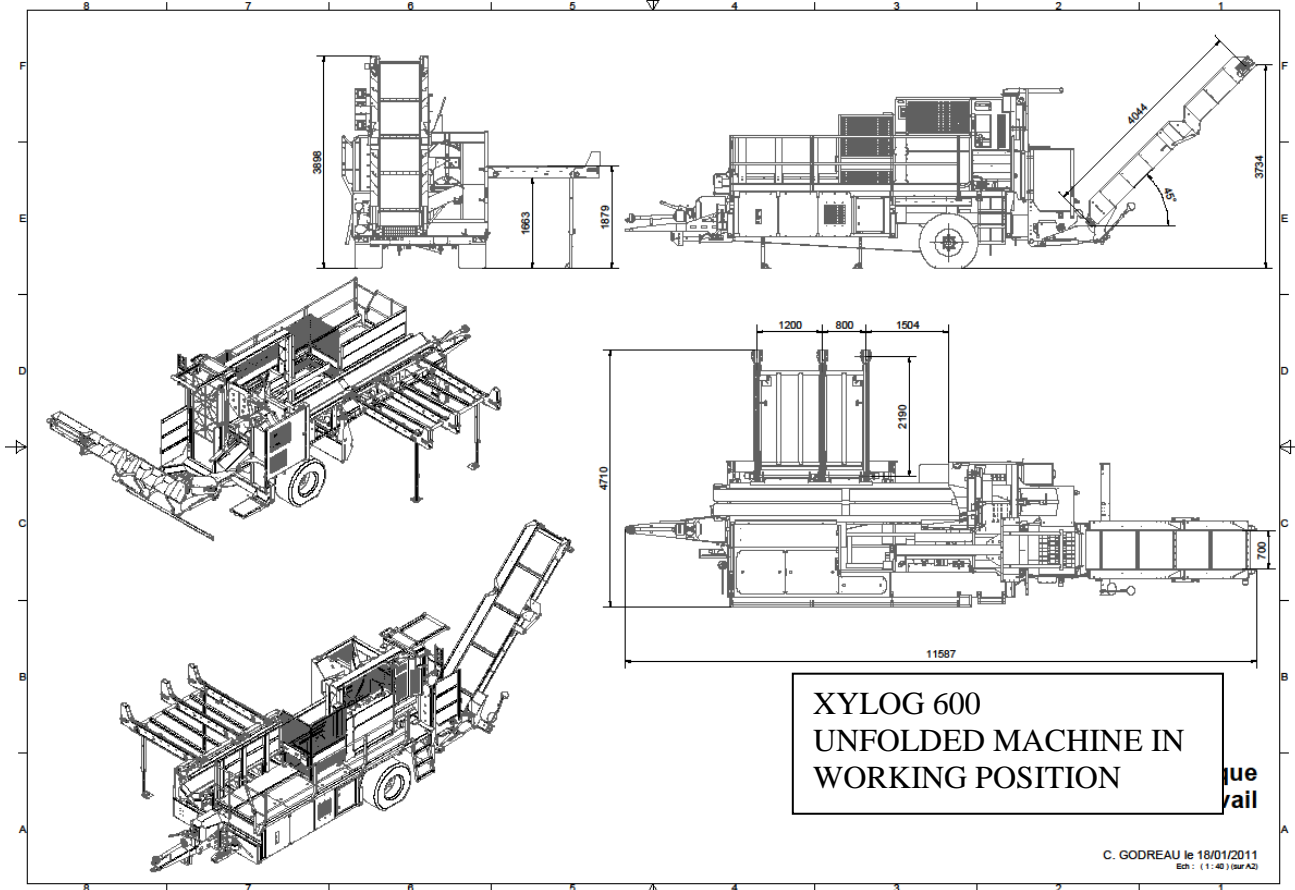
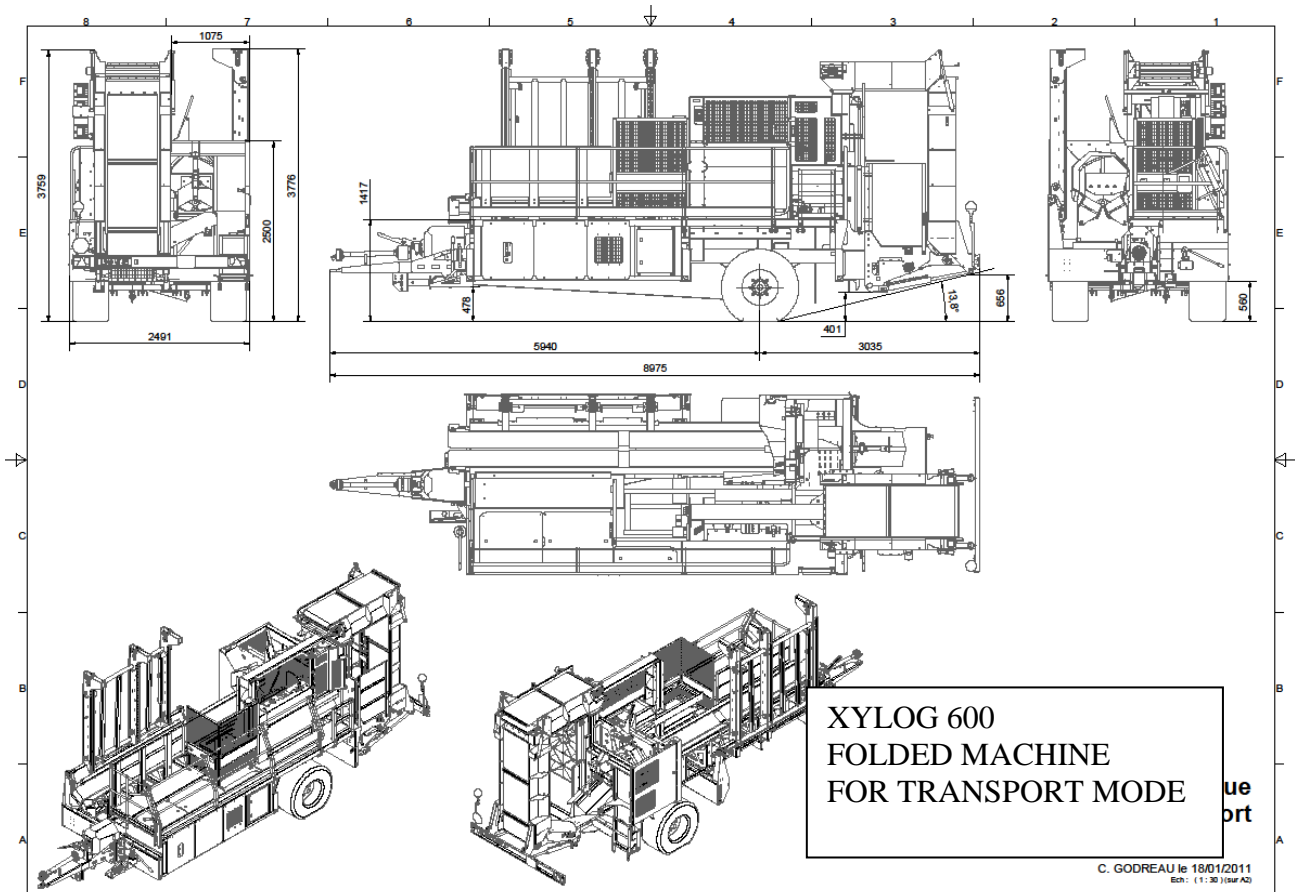
- Additionnal hydraulic line to supply a crane fitted on 3 point linkage of the tractor.

20) CRANE OPTION ON 3 POINT LINKAGE OF THE TRACTOR (Contact us):

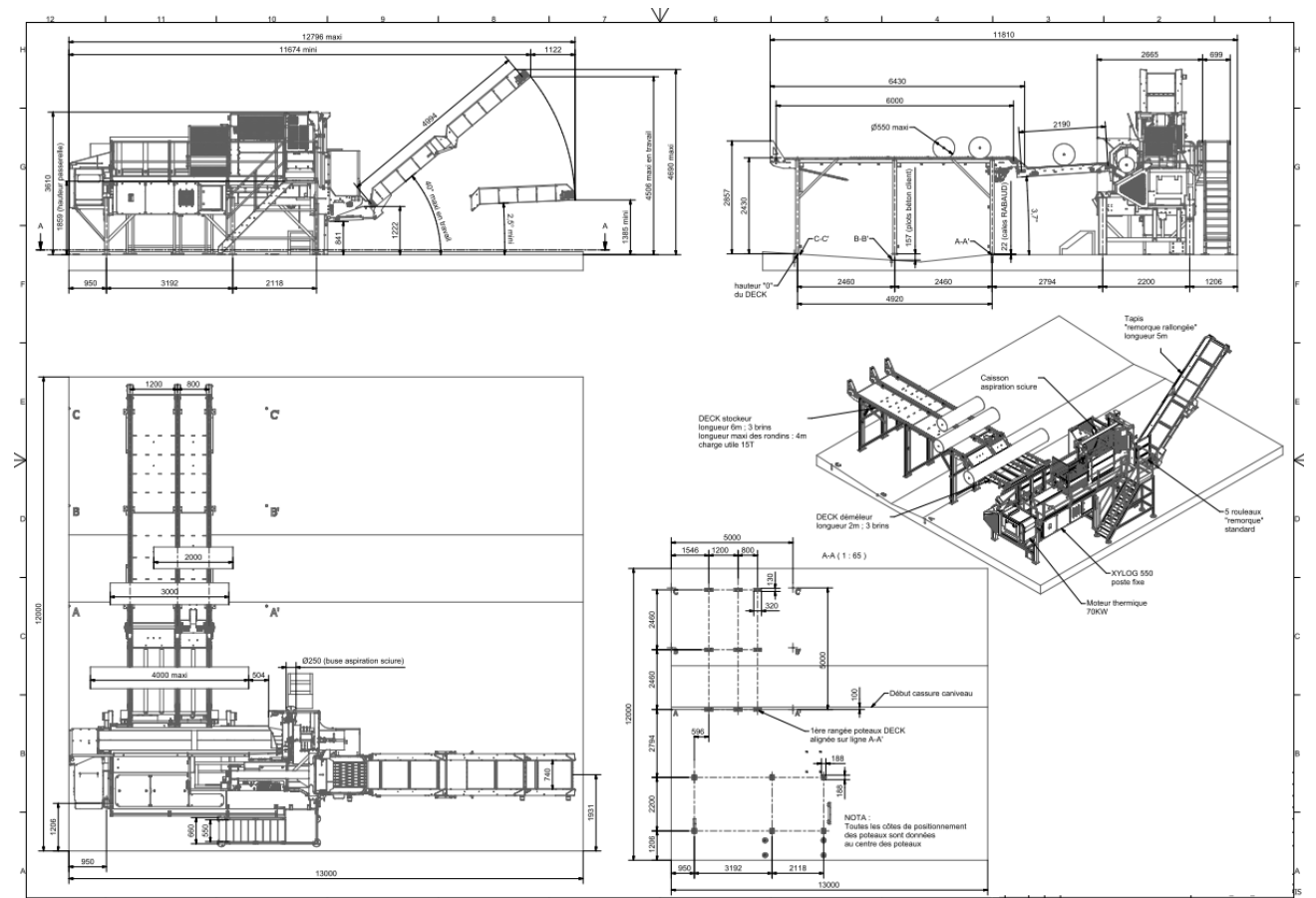
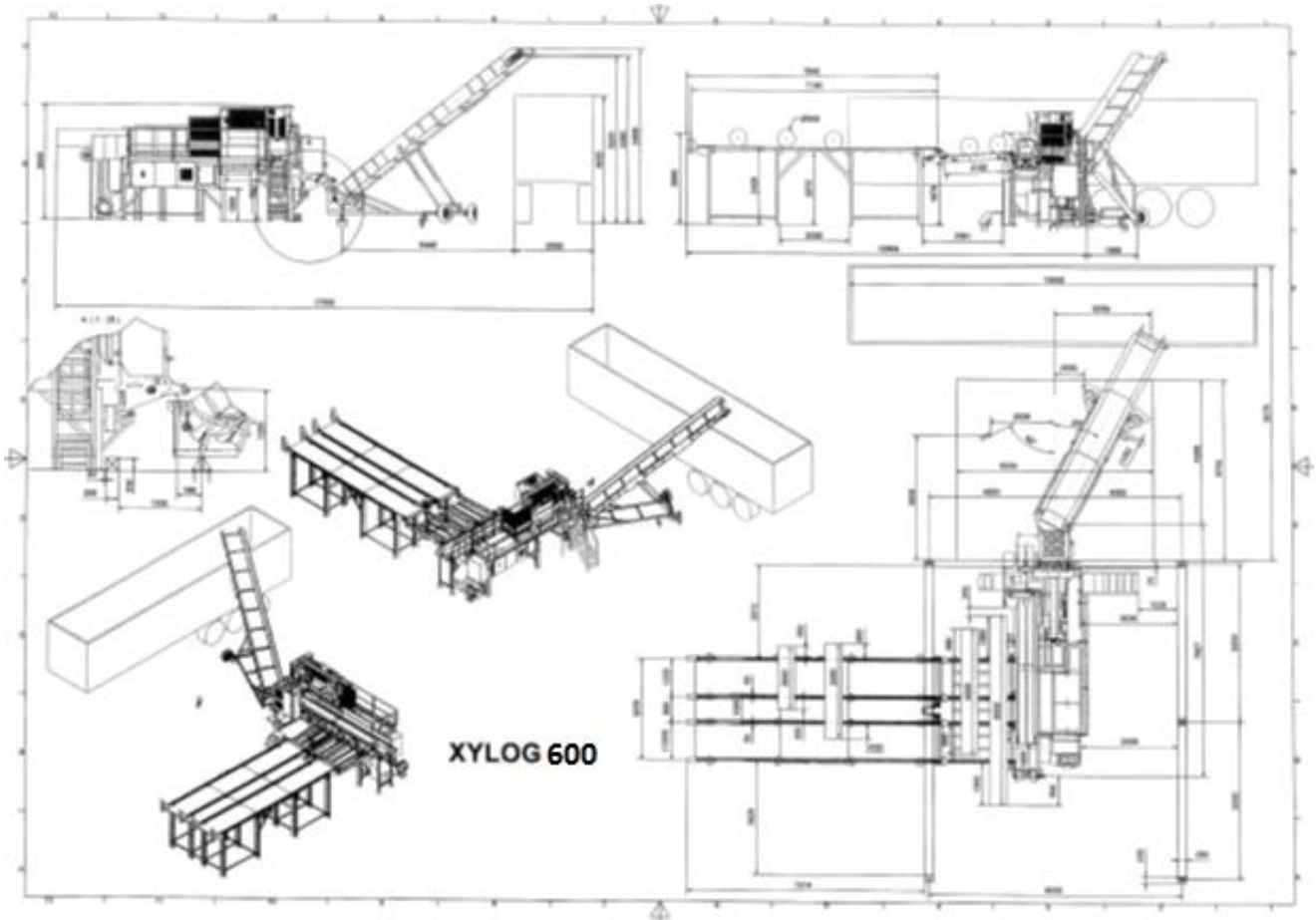
Forestry crane 6.75m or 8m with supports stand.



Mobile machine overview



Pictures



Pictures



Deck and conveyor in transport position



Mobile version with diesel engine

WOOD PROCESSOR



Control board



Display



V-shape Feeding conveyor



Loading deck 2 meter



Feeding conveyor



Cutting and splitting unit



Wedge 2-4-8-16



Xylog 600 with deck 6+2m; discharge conveyor 4+1m; feeding conveyor+wood screener and discharge conveyor



Xylog 600 with deck 6+2m ; discharge conveyor 4m



Xylog 600 with 8+2m ; discharge conveyor 4+1m, wood screener and swivelling conveyor



Log splitter



Wood processor



Wood screener



Wood palletizing



Forestry Trailer



Post peelers



Post pointers



Post driver



Timber winches



Forestry mulchers



Wood chippers



Stump grinders



Hole diggers



Unwinding machine



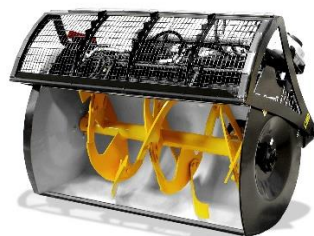
Sweepers



Vaccum cleaners



Vertical concrete mixers



Concrete mixing buckets



Hole diggers



Kerbstone edging layer

Supplied by:



Mill House,
A64 East Knapton,
Malton,
YO17 8JA

- 01944 728186
- info@ryetec.co.uk
- www.ryetec.co.uk